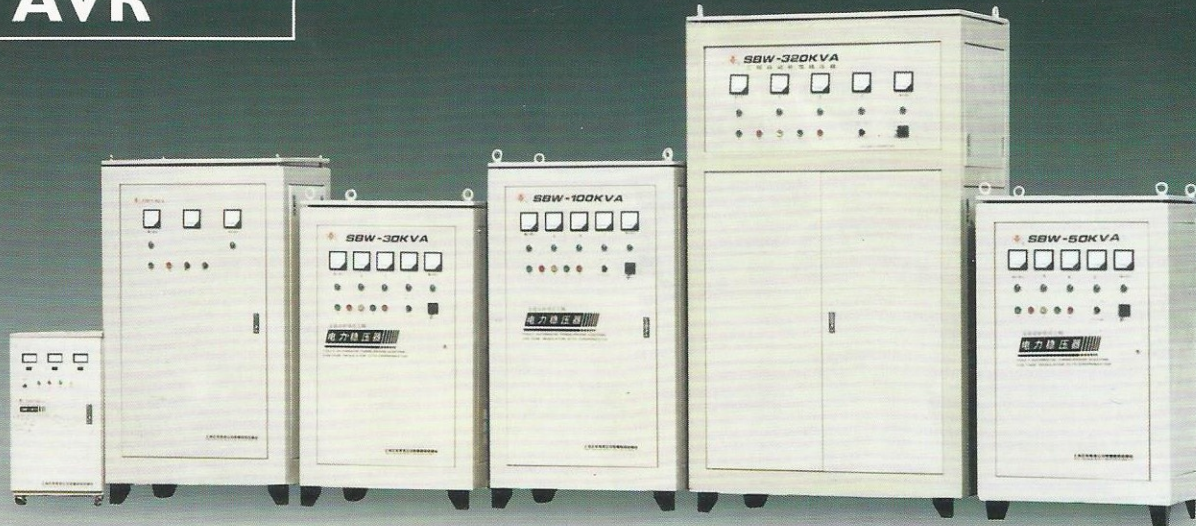


SBW&DBW

AVR



APPLICATION

SBW three phase compensated AC voltage regulator can automatically regulate output voltage to ensure the normal operating. If electric equipments when input voltage or loading current changing. It is mainly used in small-type factories, workshop of large or middle industrial and mining enterprises, and forming a complete set with single-machine of important equipments.

ENVIRONMENT DEMAND

1. Ambient temperature: 0°C - 40°C (for operating), -40°C - 60°C (for storage and transport)
2. Relative humidity: less than 90%
3. No corrosive, flammable, explodable and other conductive gas which can influence the insulation of SBW.

TECHNICAL PARAMETER

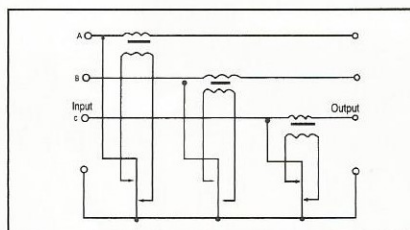
1. Input type: three-phase four-line system phase voltage: 176V-250V, line voltage: 304V-432V
2. Output type: three-phase four-line system phase voltage: 210V-230V, line voltage: 361V-399V
3. Input output terminals (phase line and neutral line) can bear 50Hz sine voltage 3000V to machine base for one minute.
4. Efficiency: better than 98% when SBW operating in normal power.
5. Additional waveform distortion of output voltage less than 1%.



APPEARANCE AND DIMENSIONS

Phase	Capacity	Dimensions	Cabinet quantity
Three Phases	50~100kVA	60 × 80 × 40	Single cabinet
	180~225KVA	75 × 105 × 170	
	320~500KVA	90 × 120 × 200	Double cabinets
	600~1000KVA	100 × 130 × 214	

DIAGRAM OF WORKING PRINCIPLE



OUTCURRENT

Normal(KW)	50	100	150	200	250	300	350	400	450	500	600	1000
Rated phase current(A)	76	152	228	304	379	455	455	607	682	758	912	1516



HONBA ELECTRIC CO.,LTD.

ADD: ZHENHUA MANSION LIUSHI YUEQING ZHEJIANG, P.R. CHINA 325604
 TEL: 0086-577-2774743 2779743 2771555 FAX: 0086-0577 2777738
 E-mail: hongbao @ mail. wzptt. zj. cn http://www. zhenhua. com